

RELAYS & CONTACTORS

AIR PRODUCTS AND CONTROLS MULTI-VOLTAGE RELAY MODULES PAM-X SERIES



AIR PRODUCTS
AND CONTROLS
You in Control



UL

MEA
approved

DESCRIPTION

The **AP PAM-X Series** relays are small encapsulated multi-voltage modules that provide 10A Form C contacts. These devices are ideal for applications where remote relays are required for control or status feedback. They are suitable for use with HVAC, temperature control, fire alarm, security, building automation, and lighting control systems.

PAM-X Series relays may be mounted by using double-sided adhesive tape (provided), a self-drilling screw, or they may be loosely placed in a handy box.

FEATURES

- **Multi-voltage input**
- **Small size**
- **Multiple mounting options**
- **Wirenuts, mounting screw, and tape included**
- **LED indication (PAM-1 and PAM-2 only)**



PAM-1

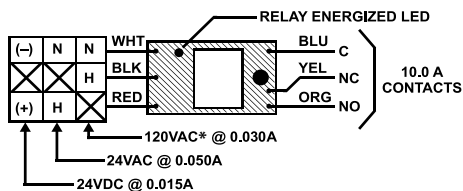


PAM-4

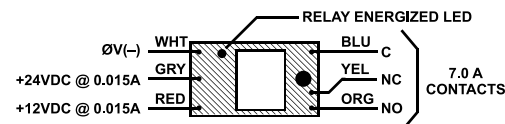
SPECIFICATIONS

Coil Rating		Wire Size	12" (30.5 cm), 18 AWG
PAM-1	24 VAC @ 50 mA, 24 VDC @ 15 mA, 120 VAC @ 30 mA	Operating Temperature	32° to 120°F (0° to 49°C)
PAM-2	12 VDC @ 15 mA, 24 VDC @ 15 mA	Mounting	Pre-drilled mounting screw hole and mounting screw provided; double-sided tape also provided
PAM-4	12-40 VDC @ 15 mA		
PAM-SD	20 to 32 VDC @ 15 mA		
Contact Rating		Dimensions	
PAM-1	250 μ A/.35 PF @ 5 VDC, 7A/.35 PF @ 24 VDC, 10 A @ 120 VAC	PAM-1	1.5"H x 1.2"W x 0.9"D (3.81 x 2.58 x 2.2 cm)
PAM-2, PAM-SD	250 μ A/.35 PR @ 5 VDC, 7A/.35 PF @ 24 VDC, and 120 VAC	PAM-2, PAM-4, PAM-SD	1.5"H x 1"W x 0.9"D (3.81 x 2.54 x 2.2 cm)
PAM-4	250 μ A @ 5 VDC, 7A @ 24 VDC, 10A @ 120 VAC	Approvals	UL Listed Fil #S3403, CSFM 7300- 1004:101, MEA 73-92-E Vol. 21
Contact Configuration	(1) SPDT dry form "C"	Weight	0.15 lb (0.068 Kg)
		Warranty	1 year

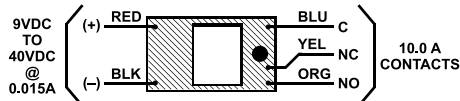
WIRING



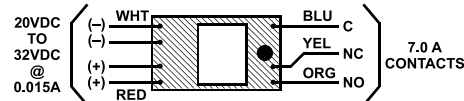
PAM-1



PAM-2



PAM-4



PAM-SD

* May not be suitable for continuous duty use at 120 VAC for extended periods of time.

ORDERING INFORMATION

MODEL	DESCRIPTION
PAM-1	Multi-voltage relay module, 24 VAC/VDC, 120 VAC
PAM-2	Multi-voltage relay module, 12 or 24 VDC
PAM-4	Multi-voltage relay module, 12-40 VDC
PAM-SD	Multi-voltage relay module, 20-32 VDC